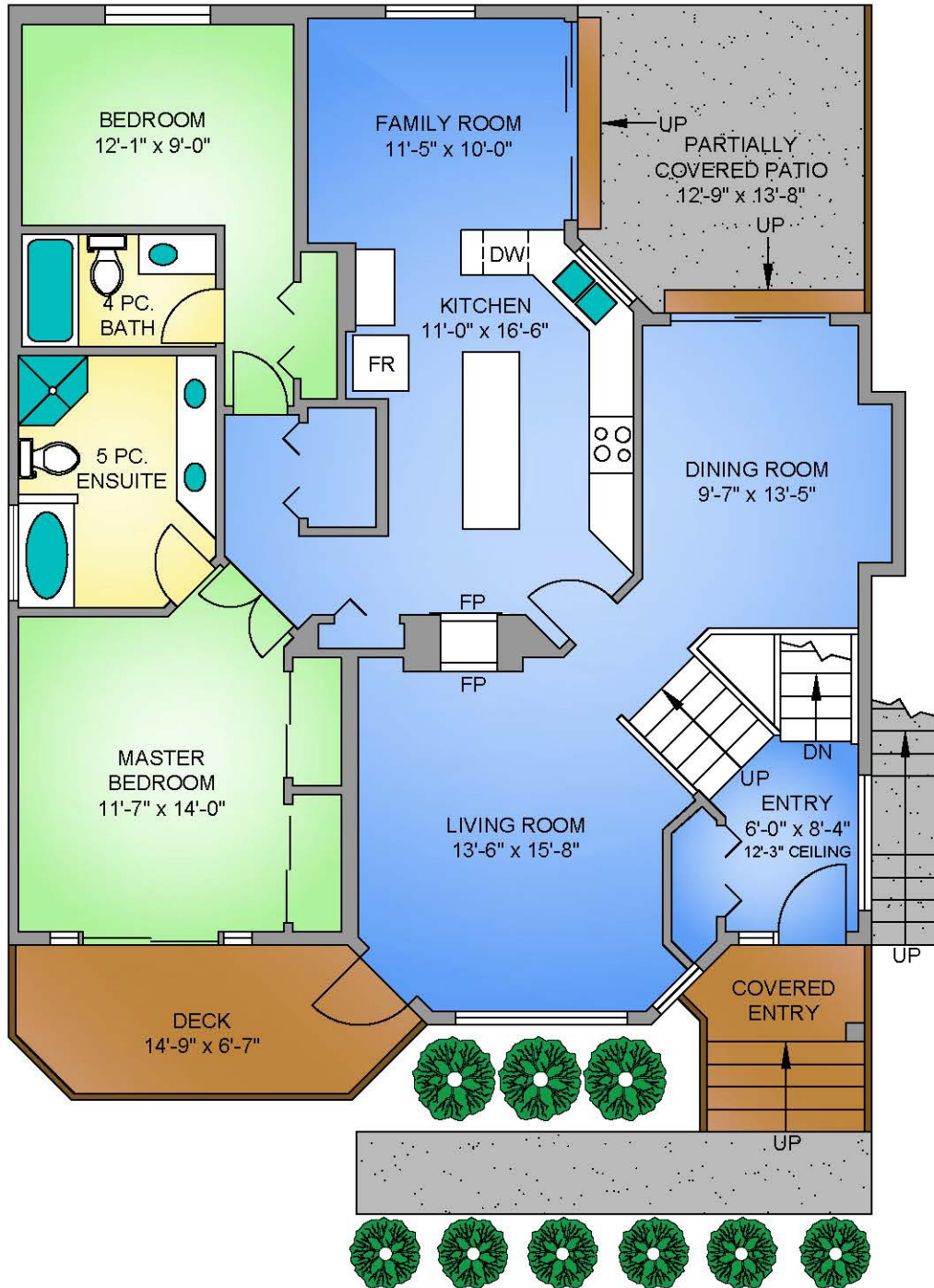
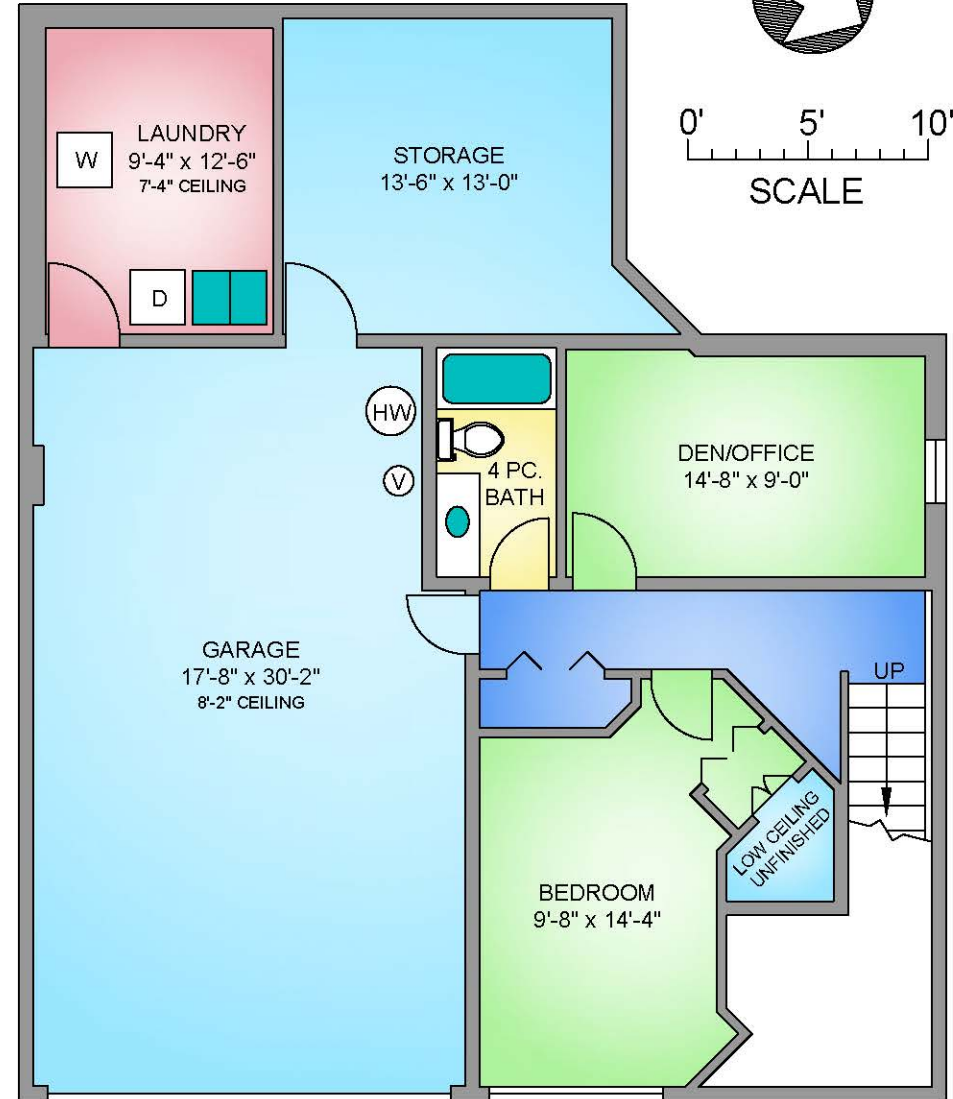


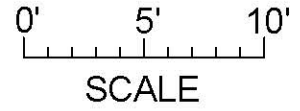
MAIN FLOOR
1485 SQ. FT.
 8'-0" CEILING HEIGHT



LOWER FLOOR
884 SQ. FT.
 8'-0" CEILING HEIGHT



NORTH



3626 PANORAMA RIDGE
 MAY 8, 2019

PREPARED FOR THE EXCLUSIVE USE OF CHRIS KRUSE.
 PLANS MAY NOT BE 100% ACCURATE, IF CRITICAL BUYER TO VERIFY.

FLOOR	AREA (SQ. FT.)		
	FINISHED	GARAGE	DECK / PATIO
MAIN	1485	-	273
LOWER	884	545	-
TOTAL	2369	545	273